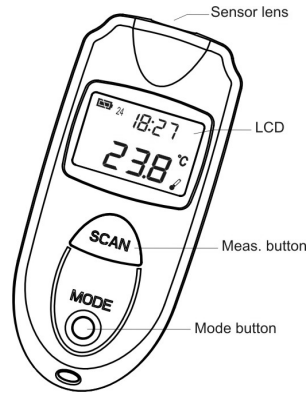


Operating Instructions for Model TN168Ci Infrared Thermometer

Thank you for purchasing our non-contact infrared thermometer. Please remember to keep away from children and don't use it for safety related applications.

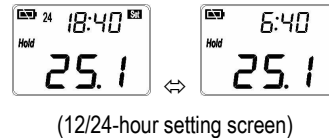
Specifications:

- ☑ Temperature measurement range: -55 to +220°C (-67~428°F)
- ☑ Operating temperature range: 0 to +50°C (32 to +122°F)
- ☑ Resolution(-9.9~199.9°C): 0.1°C/°F, otherwise 1°C/1°F (for thermometer); 0.01sec (for Stop Watch)
- ☑ Accuracy (Tamb=23±3°C):
Above 0°C: +/-2.5% or 2.5°C (4.5°F) whichever is greater
-55~ 0°C: +/- (2.5+0.05/deg) °C
- ☑ Field of View: 1:1
- ☑ Emissivity: 0.95 fixed
- ☑ **Auto real time clock and Room temperature while power off**
- ☑ °C / °F Switch, MIN/MAX/LOCK, Stop Watch function
- ☑ Battery Life: 40 hours continuous use (auto power off after 15seconds), The battery life of the shelf =8month.
- ☑ Battery: one CR2032 lithium cell battery



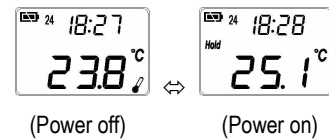
Real time clock setting

- Power on: Press the "Meas. key".
- Press the "Mode key" six times and the "Set" icon starts to flash, which indicates the setting screen.
- Press the "Meas. key" to make the "24" icon flashing, which indicates the 12/24-hour setting screen.
Press the "Meas. key" again to set 12/24-hour Format from 24-hour to 12-hour.
- Press the "Mode key" to move the flashing in the sequence shown below to select other settings.
Hour → Minutes
- While the hour, minutes setting is flashing, use "Meas. key" to change it. Press "Mode key" when complete.



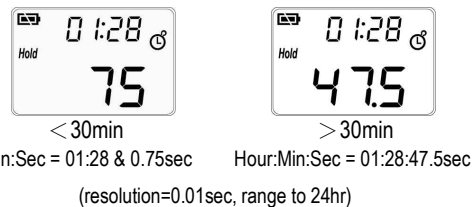
Use of the thermometer

- Always make sure the sensor lens is clean without any damage.
- Power on: Press the "Meas. key".
- Temperature taking: When you press the "Meas. key", will get the temperature immediately. If you hold down the "Meas. key", the reading of measurement will be continuous updated.
Note: The Distance:Spot is 1:1. Please make sure the target area is within the field of view.
Note: Applications include the Water, Milk and Cloth, or visit [Http://www.ZyTemp.com](http://www.ZyTemp.com) for further information.
Note: The product is not intended to diagnose, treat, cure or prevent any disease.
Power off: Device will automatically power off if left idle for more than 15sec to extend battery life
****If you have set the "clock" mode, after "power-off", room temperature & clock will be showed on the screen all the time.**



Use of the Stop Watch

- Power on: Press the "Meas. key".
- Press the "Mode key" four times and the "count" icon starts to flash.
- For start or stop counting, press the "Meas. key".
For reset counting, press the "Mode key".
- Press "Mode key" to enter the thermometer function



Other Functions

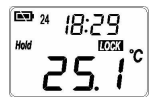
MIN / MAX

→ Power on and press the "Mode key" once for the Minimum (MIN) or twice for Maximum (MAX) modes. When the MIN or MAX icon flashes, press the "Meas. key" to confirm. Hold down the "Meas. key", the minimum or maximum reading of measurement will be continuous updated.



LOCK

→ Power on and press the "Mode key" three times. When the LOCK icon flashes, press the "Meas. key" to confirm. This mode is particularly useful for continuous monitoring of temperatures for up to 60 minutes or until the "Meas. key" is pressed.

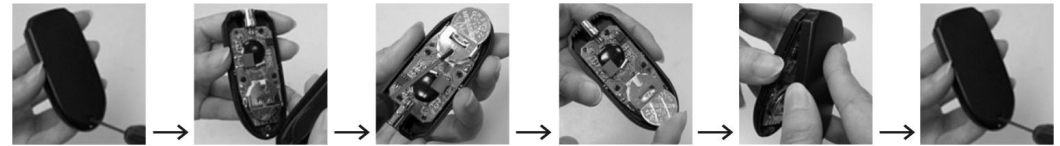


°C / °F

→ Power on and press the "Mode key" five times. When the °C icon flashes, press the "Meas. key" to change the scale to °F. The setting will be reserved even if power off.



Battery replacement (Remember to power off the unit before replacing the battery)



- Loosen the screw on the back housing of anti-clockwise.
- Open the back housing.
- Hold the device and use the screwdriver to take the battery out.
- Replace the new battery and put it on the left side of back housing (Make sure the battery is hooked.) Then, press the right side of the battery until you hear a click sound
- First, close the upper side. Then, close the bottom side.
- Fasten the screw on the back housing.

⚠ A malfunction may occur if the power is on when the battery is replaced. If a malfunction occurs, restart the device. Keep the battery away from children.

Important notes

- Storage & Cleaning:** The sensor lens should be kept clean at all times and stored at room temperature.
- Use only a soft cloth or cotton swab with water or medical alcohol when cleaning the lens.
 - Remember to allow the lens to fully dry before using.
 - The thermometer should be stored at -10 to +60 °C (14 to 140 °F).

EMC/RFI: Readings may be affected if the unit is operated within radio frequency electromagnetic field strength of approximately 3 volts per meter, but the performance of the instrument will not be permanently affected.

Trouble shooting

- | | | |
|-----|-----|---|
| Hi | Lo | 'Hi' or 'Lo' is displayed when the temperature being measured is outside of the measurement range. ☑ Please select target within specifications. If a malfunction still exists, please contact the nearest retailer. |
| Er2 | Er3 | |
| Er | | 'Er2' is displayed when the thermometer is exposed to rapid changes in the ambient temperature. 'Er3' is displayed when the ambient temperature exceeds 0°C (32°F) or 50°C (122°F). ☑ The thermometer should be allowed plenty of time (minimum 30 minutes) to stabilize to the working/room temperature. |
- ☑ For all other error messages it is necessary to reset the thermometer. To reset the thermometer, waiting for the instrument power off, remove the battery and wait for a minimum of one minute, reinsert the battery and turn on. If the error message remains please contact the Service Department for further assistance.

ZyTemp

Manufactured by Radiant Innovation Inc.
[Http://www.ZyTemp.com](http://www.ZyTemp.com), E-mail: Service@ZyTemp.com
 1F, No.3, Industrial East 9th Road, Science-Based Industrial Park, HsinChu, Taiwan 300.

A new way to measure temperature

Ref No.:052011

